

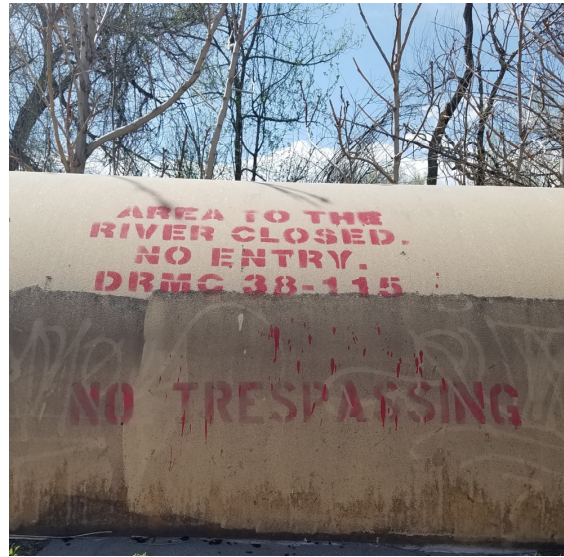


# RIVERFRONT UPDATE

April 25, 2019

IMAGINE. DISCOVER. CULTIVATE.

# EXISTING RIVERFRONT

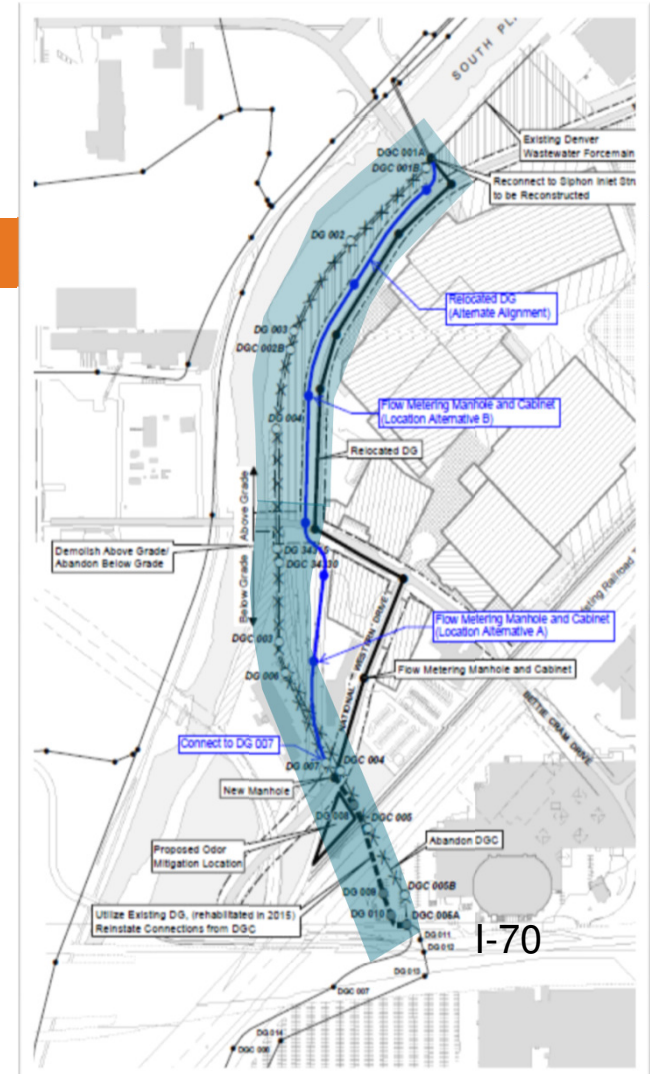




# METRO WASTEWATER IGA

## IGA: Intergovernmental Agreement

- Three primary objectives:
  1. Relocate and bury the Delgany Interceptor
  2. Provide access to sewer heat for the NWC Campus Energy Partner
  3. Mitigate odors from the Delgany via a new biofilter
- Metro Board and City Council approved



# RIVERFRONT OPEN SPACE - PROCESS

- Campus Placemaking – Complete
  - Includes Design Standards and Guidelines and Design Handbook
- Program Refinement: NWC Authority Cultivate process, potential new stakeholders
- Revised Conceptual Design
- Stakeholder and Community Feedback
- Seek funding & partners
- Final Design
- Construction





# ENGAGEMENT & OUTREACH

- NWC Citizens Advisory Committee – Ongoing regular updates
- Campus Placemaking - Complete
  - User Experience Interviews (e.g. elementary school parents)
  - Stakeholder meetings and focus groups
  - Public Realm programming ideas
  - Public Meetings
  - Design Standards and Guidelines/Design Handbook
- Program and Concept Design Review (2019)
  - Riverfront Stakeholder Group



IMAGINE. DISCOVER. CULTIVATE.

# NEIGHBORHOOD CONNECTIVITY

## Regional Bike Trail Connections

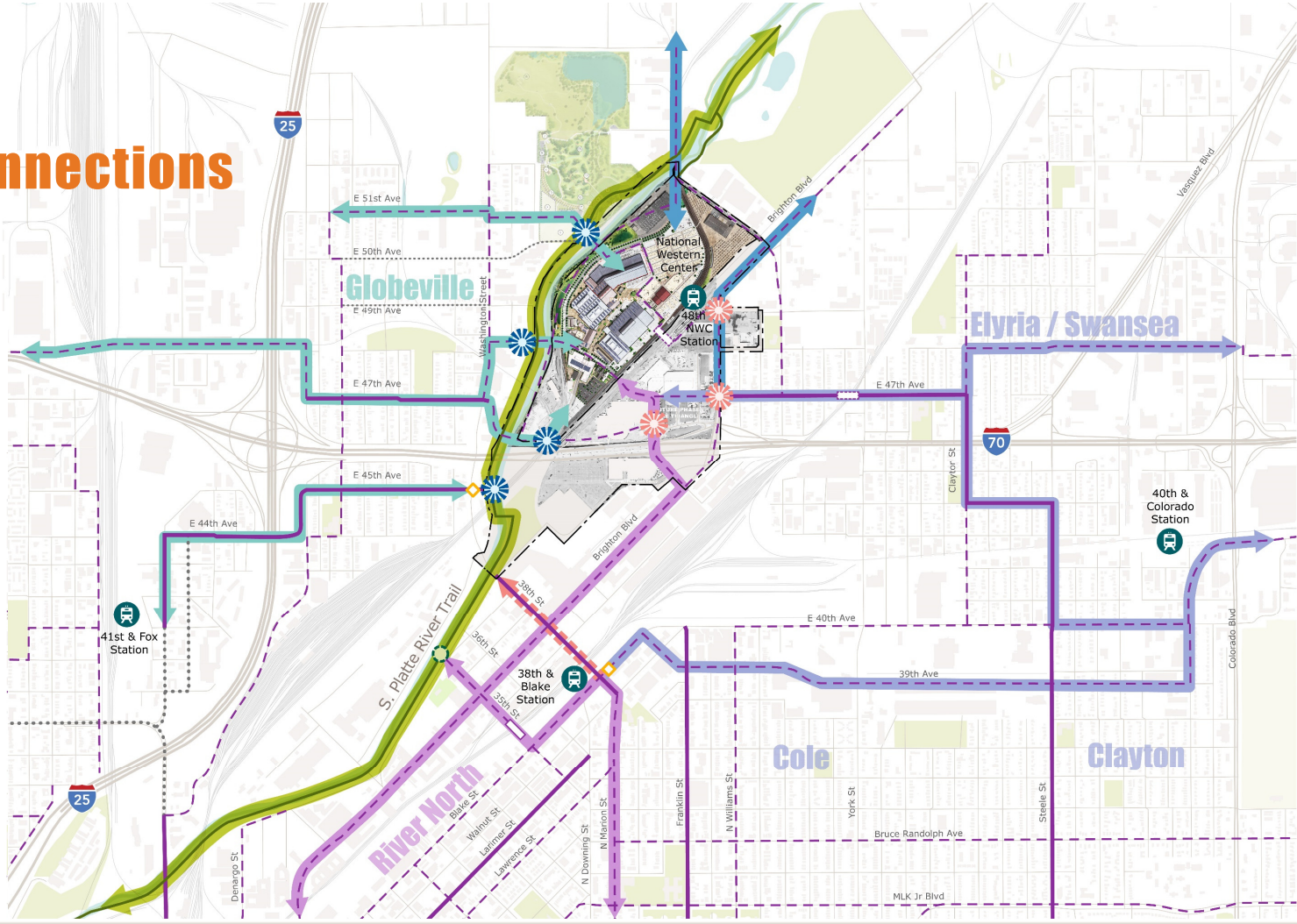
### LEGEND

- Building Footprint
- Street
- Parcel
- RTD Rail Station
- Railroad
- Park/Open Space
- Water Body
- Existing Regional Bike Facilities\*
- Existing Neighborhood Bike Facilities\*
- Proposed Neighborhood Bike Facilities\*
- Potential Future Bike Facility\*
- NWC Gateway - Phase I
- NWC Gateway - Phase II
- Pedestrian/Bike Bridge
- Proposed Pedestrian/Bike Bridge
- Potential Bike Facility Improvement
- Future Trail Connection
- Intersection / Connection Improvement

**Regional Connection to NWC**  
 The South Platte River trail provides the only direct regional connection to NWC from areas north and south. The alignment is planned to remain along the western edge of the river but some modifications are expected as a part of the planned improvements at Carpio-Sanguinette Park.

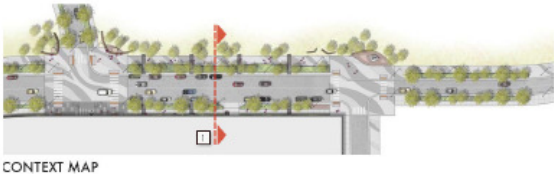
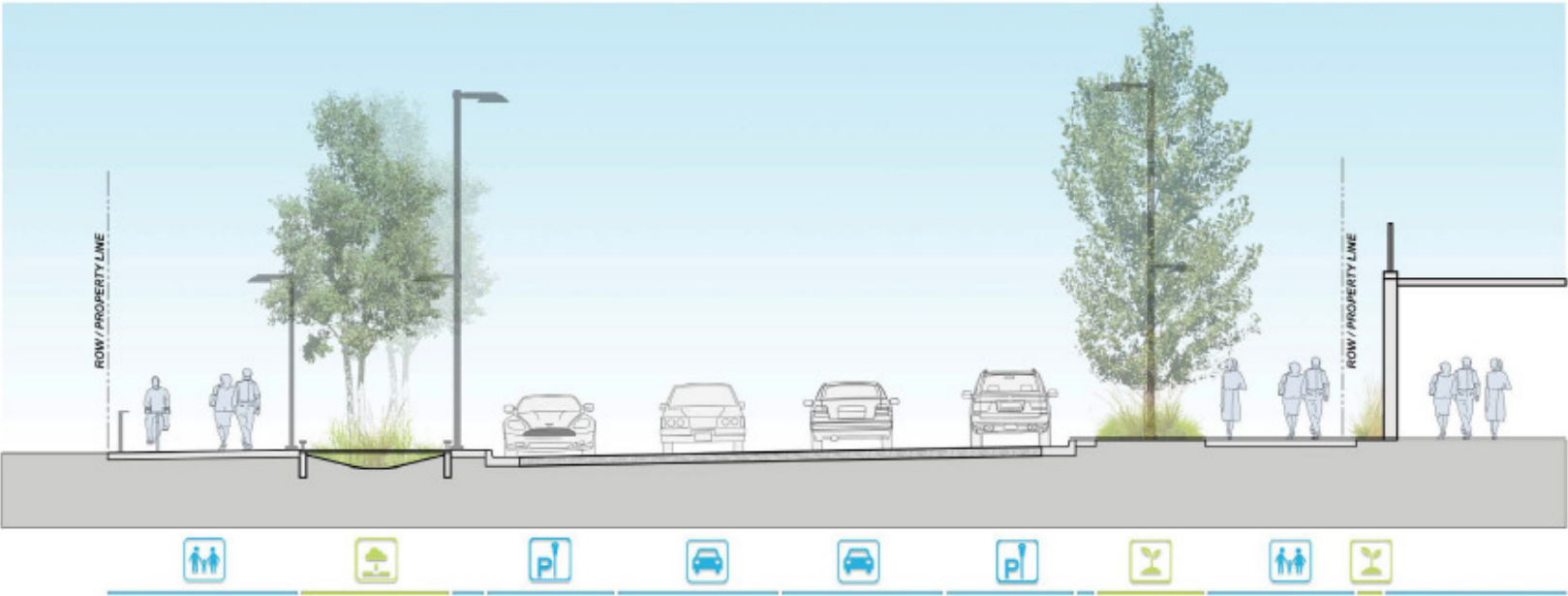
**Neighborhood Connection to NWC**  
 Neighborhood connections include anticipated primary bike routes to and from adjacent neighborhoods. Routes were selected based on their ability to provide a direct connection to NWC from each neighborhood or adjacent residential area.

- Connection from Globeville
- Connection from RiNO
- Connection from Elyria/Swansea, Cole and Clayton
- Connection from North



# RIVERFRONT EDGE

## National Western Drive – Proposed Section



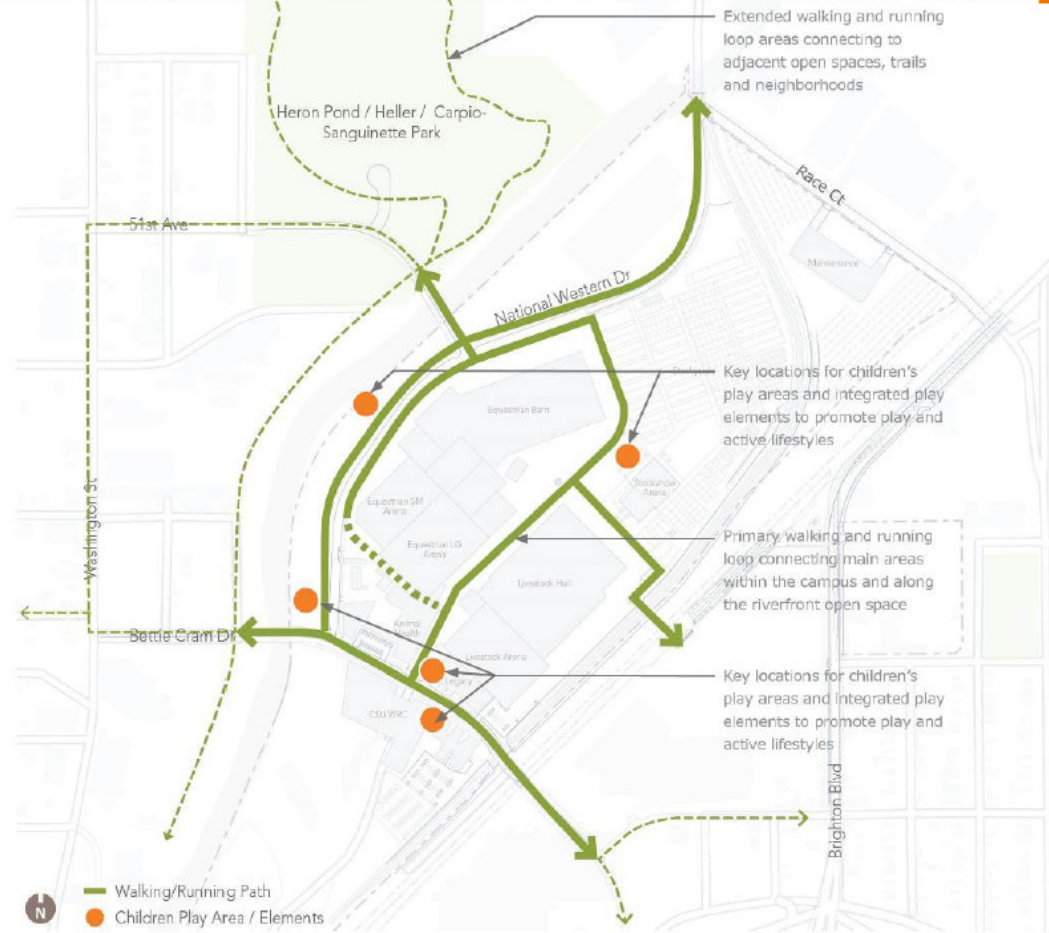
IMAGINE. DISCOVER. CULTIVATE.



# CAMPUS PLACEMAKING



## Health and Wellness Public Realm Study



# PUBLIC ART

## Public Art Opportunity Sites

- Multiple opportunities for public art within the riverfront and at the river bridges
- Specific riverfront opportunities for local artists
- Arts and Venues leading the effort to set up the public art selection committees





# RIVERFRONT PROGRAMMING

## Telling the Story of: The River Through Education and Play



IMAGINE. DISCOVER. CULTIVATE.

















IMAGINE. DISCOVER. CULTIVATE.

# PROGRAMMING IDEAS

- Wetlands overlook, seating and boardwalk
- Expanded riparian areas
- Amenity zone along National Western Drive
- Picnic grove
- Walks and trails
- River access
- Sheep Bridge plaza
- Learning lab/water education center/Nature play
- Café/Beer Garden/Restaurant
- Outdoor classroom
- Event lawn/Children's play area
- Patios and plaza spaces
- Public Art
- Other ideas from Cultivate and the Public





# RIVERFRONT CONCEPT DESIGN





# RIVERFRONT OPEN SPACE-SCHEDULE

**April 2019-May 2019**

**Program refinement** and review and input by NWC Authority and potential funding partners to identify potential additional programming opportunities

**June 2019-August 2019**

Development of potential **3<sup>rd</sup> Party Agreements**

**August 2019-April 2020**

**Riverfront Design** (30, 60, 100% documentation)

**February 2020-July 2020**

**Construction Procurement**

**February 2021-February 2023**

**Riverfront Construction**





**THANK YOU**



[www.nationalwesterncenter.com](http://www.nationalwesterncenter.com)